



**THE
WIMBLEDON
EXPERIENCE**

OFFICIAL TOURS PROVIDED BY WIMBLEDON EXPERIENCE

ВИКИТРЕВЕЛ +7 (495) 989-43-88 HOTEL@VKITRavel.RU

The Championships, Wimbledon 2013

BASELINE TOUR

MONDAY 24 JUNE - TUESDAY 2 JULY



Индивидуальные и групповые экскурсионные туры в Англию-Шотландию-Уэльс. Каникулярные образовательные программы для школьников и студентов. Корпоративные мероприятия в Лондоне и Шотландии. Футбольные туры на Королевскую Премьер Лигу Англии. Визовая поддержка в UK!

(495) 989-43-88, 979-31-39 • www.vkitravel.ru • visa@vkitravel.ru





THE WIMBLEDON EXPERIENCE

OFFICIAL TOURS PROVIDED BY WIMBLEDON EXPERIENCE

ВИКИТРЕВЕЛ +7 (495) 989-43-88 HOTEL@VIKITRavel.RU

The Championships Wimbledon 2013

MONDAY 24 JUNE - TUESDAY 2 JULY



BASELINE TOUR

For the tennis fan on a budget The Wimbledon Baseline tour combines a day at The Championships and one nights accommodation. The tour is available with Centre Court, No. 1 Court or No. 2 Court ticket options, London Underground travel for the day and a gift voucher for the Wimbledon shop.

HOTELS AVAILABLE

★ RATING	HOTEL
3 Star Hotel	Ibis - Earls Court
4 Star Hotel	Doubletree Hilton - Westminster Doubletree Hilton - Tower of London The Kensington Doyle - Kensington
5 Star Hotel	The St.Pancras Renaissance - Kings Cross The Savoy Hotel - The Strand

PACKAGE DETAILS

- Reserved seat for one day at The Championships, on Centre Court, No. 1 Court or No. 2 Court for your choice of date from Monday 24 June - Tuesday 2 July
- One night accommodation in a London hotel, sharing a twin bedded room, with full English breakfast (additional nights available upon request). Please note there will be a supplement for single rooms
- Return transfers from Southfields Underground Station to The Wimbledon Experience via the shuttle bus
- Information pack containing: one day London Travelcard, itinerary, event card, event wallet and travel information
- Wimbledon gift voucher for the Wimbledon shop and official Wimbledon programme
- Admission to the Wimbledon Lawn Tennis Museum
- Admission to The Wimbledon Experience for ticket collection, complimentary tea, coffee and Danish pastries
- Televisions to keep guests informed of play
- Air-conditioning
- Keith Prowse Event Team in attendance throughout the day
- Photo souvenir
- Wi-Fi available throughout The Wimbledon Experience



Индивидуальные и групповые экскурсионные туры в Англию-Шотландию-Уэльс. Каникулярные образовательные программы для школьников и студентов. Корпоративные мероприятия в Лондоне и Шотландии. Футбольные туры на Королевскую Премьер Лигу Англии. Визовая поддержка в UK!

(495) 989-43-88, 979-31-39 • www.vikitavel.ru • visa@vikitavel.ru





THE WIMBLEDON EXPERIENCE

OFFICIAL TOURS PROVIDED BY WIMBLEDON EXPERIENCE

ВИКИТРЕВЕЛ +7 (495) 989-43-88 HOTEL@VIKITRAVEL.RU

BASELINE TOUR - PRICE GUIDE

FULLY INCLUSIVE PRICE PER PERSON (IN UK POUNDS) - INCLUSIVE OF ALL UK TAXES

CENTRE COURT	3 STAR HOTEL ★★★	4 STAR HOTEL ★★★★	5 STAR HOTEL ★★★★★
Monday 24 June	£865	£945	£1160
Tuesday 25 June	£820	£945	£1160
Wednesday 26 June	£890	£955	£1225
Thursday 27 June	£980	£1030	£1225
Friday 28 June	£1260	£1235	£1310
Saturday 29 June	£1260	£1235	£1410
Monday 1 July	£1260	£1235	£1410
Tuesday 2 July	£1215	£1235	£1410
NO. 1 COURT	3 STAR HOTEL ★★★	4 STAR HOTEL ★★★★	5 STAR HOTEL ★★★★★
Monday 24 June	£550	£695	£945
Tuesday 25 June	£550	£695	£995
Wednesday 26 June	£585	£720	£1005
Thursday 27 June	£585	£520	£1065
Friday 28 June	£665	£755	£1050
Saturday 29 June	£665	£875	£1050
Monday 1 July	£665	£875	£1050
Tuesday 2 July	£610	£770	£1005
NO. 2 COURT	3 STAR HOTEL ★★★	4 STAR HOTEL ★★★★	5 STAR HOTEL ★★★★★
Monday 24 June	£500	£650	£905
Tuesday 25 June	£500	£650	£905
Wednesday 26 June	£520	£675	£960
Thursday 27 June	£520	£675	£960
Friday 28 June	£530	£685	£975
Saturday 29 June	£530	£685	£975
Monday 1 July	£530	£685	£975
Tuesday 2 July	£530	£645	£950

Fully inclusive price per person (in UK pounds) inclusive of all UK taxes



Индивидуальные и групповые экскурсионные туры в Англию-Шотландию-Уэльс. Каникулярные образовательные программы для школьников и студентов. Корпоративные мероприятия в Лондоне и Шотландии. Футбольные туры на Королевскую Премьер Лигу Англии. Визовая поддержка в UK!

(495) 989-43-88, 979-31-39 • www.vikitavel.ru • visa@vikitavel.ru





PROVISIONAL SCHEDULE OF PLAY

DATE	PROVISIONAL SCHEDULE OF PLAY
Monday 24 June	Reigning Men's Singles Champion opens play on Centre Court First round matches - Men's and Ladies' Singles
Tuesday 25 June	Reigning Ladies' Singles Champion opens play on Centre Court First round matches - Men's and Ladies' Singles
Wednesday 26 June	Second round matches - Men's and Ladies' Singles First round matches - Men's and Ladies' Doubles
Thursday 27 June	Second round matches - Men's and Ladies' Singles First round matches - Men's and Ladies' Doubles
Friday 28 June	Third round matches - Men's and Ladies' Singles Second round matches - Men's and Ladies' Doubles First round matches - Mixed Doubles
Saturday 29 June	Third round matches - Men's and Ladies' Singles Second round matches - Men's and Ladies' Doubles First round matches - Mixed Doubles Boys' and Girls' Championships begin Men's and Ladies' over 35's & over 45's Championships begin
Monday 1 July	Fourth round matches - Men's and Ladies' Singles Third round matches - Men's and Ladies' Doubles Second round matches - Mixed Doubles
Tuesday 2 July	Quarter-Finals - Ladies' Singles Fourth round matches - Men's Singles Third round matches - Men's and Ladies' Doubles Third round matches - Mixed Doubles

- Every endeavour is made to ensure that all the information in this factsheet is correct at time of going to press. However package, price and content are subject to change. Please note this tour is strictly for customers outside the UK.
- Wheelchair access is not permitted with a reserved ticket, please contact us for further details.
- The progress of play is dependent on weather, injury etc. Tickets, including those for the final Sunday, are valid for the date and court shown. They are non-transferable and not valid for any other day or court.

PLEASE NOTE: All your event documentation will be available for collection upon check in at the hotel or at The Wimbledon Experience if you are not staying the night prior. Your court tickets will be given out on day at The Wimbledon Experience.





THE WIMBLEDON EXPERIENCE

OFFICIAL TOURS PROVIDED BY WIMBLEDON EXPERIENCE
ВИКИТРЕВЕЛ +7 (495) 989-43-88 HOTEL@VIKITRAVEL.RU

The Championships Wimbledon 2013

MONDAY 24 JUNE - WEDNESDAY 3 JULY



CHAMPIONSHIP TOUR

This tour enables tennis fans to watch two days of tennis; a day's play on Centre Court and another on No. 1 Court. Also included is 3 nights accommodation and buffet lunch each day at The Wimbledon Experience making this the most effective and relaxed way to enjoy the magic of Wimbledon.

HOTELS AVAILABLE

★ RATING	HOTEL
3 Star Hotel	Ibis - Earls Court
4 Star Hotel	Doubletree Hilton - Westminster Doubletree Hilton - Tower of London The Kensington Doyle - Kensington
5 Star Hotel	The St.Pancras Renaissance - Kings Cross The Savoy Hotel - The Strand

PACKAGE DETAILS

- Reserved seat for two days at The Championships on Centre and No.1 Court (1 each day)
- Three nights accommodation in a London hotel, sharing a twin/double bedded room, with full English breakfast daily (additional nights available upon request). Please note there will be a supplement for single rooms
- Return transfers from Southfields Underground Station to The Wimbledon Experience via the shuttle bus
- Information pack containing: two London Travelcards, itinerary, event card, event wallet and travel information
- Wimbledon gift voucher for the Wimbledon shop and official Wimbledon programme
- Admission to the Wimbledon Lawn Tennis Museum
- Admission to The Wimbledon Experience for ticket collection, complimentary tea, coffee and Danish pastries
- You are invited to The Wimbledon Experience for a buffet lunch on both days. Beer, wine, soft drinks and dessert available.
- Televisions to keep guests informed of play
- Air-conditioning
- Keith Prowse Event Team in attendance throughout the day
- Souvenir photograph
- Wi-Fi available throughout The Wimbledon Experience



Индивидуальные и групповые экскурсионные туры в Англию-Шотландию-Уэльс. Каникулярные образовательные программы для школьников и студентов. Корпоративные мероприятия в Лондоне и Шотландии. Футбольные туры на Королевскую Премьер Лигу Англии. Визовая поддержка в UK!

(495) 989-43-88, 979-31-39 • www.vikitavel.ru • visa@vikitavel.ru





THE WIMBLEDON EXPERIENCE

OFFICIAL TOURS PROVIDED BY WIMBLEDON EXPERIENCE

ВИКИТРЕВЕЛ +7 (495) 989-43-88 HOTEL@VIKITRAVEL.RU



CHAMPIONSHIP TOUR - PRICE GUIDE

FULLY INCLUSIVE PRICE PER PERSON (IN UK POUNDS) - INCLUSIVE OF ALL UK TAXES

TOUR NUMBER	DATES	COURTS	3 STAR HOTEL ★★★	4 STAR HOTEL ★★★★	5 STAR HOTEL ★★★★★
1	Monday 24 June Tuesday 25 June	Centre No. 1	£1790	£1990	£2630
2	Monday 24 June Tuesday 25 June	No. 1 Centre	£1400	£1610	£2355
3	Wednesday 26 June Thursday 27 June	Centre No. 1	£1655	£1865	£2505
4	Wednesday 26 June Thursday 27 June	No. 1 Centre	£1715	£1880	£2525
5	Friday 28 June Saturday 29 June	Centre No. 1	£2275	£2385	£3125
6	Friday 28 June Saturday 29 June	No. 1 Centre	£2295	£2545	£3200
7	Monday 1 July Tuesday 2 July	Centre No. 1	£2255	£2510	£3260
8	Monday 1 July Tuesday 2 July	No. 1 Centre	£2345	£2565	£3260
9	Tuesday 2 July Wednesday 3 July	Centre No. 1	£2590	£2735	£3640
10	Tuesday 2 July Wednesday 3 July	No. 1 Centre	£2785	£2925	£3770

Fully inclusive price per person (in UK pounds) inclusive of all UK taxes

• Every endeavour is made to ensure that all the information in this factsheet is correct at time of going to press. However package, price and content are subject to change.

• Wheelchair access is not permitted with a reserved ticket, please contact us for further details.

• The progress of play is dependent on weather, injury etc. Tickets, including those for the final Sunday, are valid for the date and court shown. They are non-transferable and not valid for any other day or court.

PLEASE NOTE: All your event documentation will be available for collection upon check in at the hotel or at The Wimbledon Experience if you are not staying the night prior. Your court tickets will be given out on day at The Wimbledon Experience.



Индивидуальные и групповые экскурсионные туры в Англию-Шотландию-Уэльс. Каникулярные образовательные программы для школьников и студентов. Корпоративные мероприятия в Лондоне и Шотландии. Футбольные туры на Королевскую Премьер Лигу Англии. Визовая поддержка в UK!

(495) 989-43-88, 979-31-39 • www.vikitravel.ru • visa@vikitravel.ru





PROVISIONAL SCHEDULE OF PLAY

DATE	PROVISIONAL SCHEDULE OF PLAY
Monday 24 June	Reigning Men's Singles Champion opens play on Centre Court First round matches - Men's and Ladies' Singles
Tuesday 25 June	Reigning Ladies' Singles Champion opens play on Centre Court First round matches - Men's and Ladies' Singles
Wednesday 26 June	Second round matches - Men's and Ladies' Singles First round matches - Men's and Ladies' Doubles
Thursday 27 June	Second round matches - Men's and Ladies' Singles First round matches - Men's and Ladies' Doubles
Friday 28 June	Third round matches - Men's and Ladies' Singles Second round matches - Men's and Ladies' Doubles First round matches - Mixed Doubles
Saturday 29 June	Third round matches - Men's and Ladies' Singles Second round matches - Men's and Ladies' Doubles First round matches - Mixed Doubles Boys' and Girls' Championships begin Men's and Ladies' over 35's & over 45's Championships begin
Monday 1 July	Fourth round matches - Men's and Ladies' Singles Third round matches - Men's and Ladies' Doubles Second round matches - Mixed Doubles
Tuesday 2 July	Quarter-Finals - Ladies' Singles Fourth round matches - Men's Singles Third round matches - Men's and Ladies' Doubles Third round matches - Mixed Doubles
Wednesday 3 July	Quarter-Finals - Men's Singles Quarter-Finals - Men's and Ladies' Doubles Third round matches - Mixed Doubles
Thursday 4 July	Semi-Finals - Ladies' Singles Semi-Finals - Men's and Ladies' Doubles Quarter-Finals - Mixed Doubles
Friday 5 July	Semi-Finals - Men's Singles Semi-Finals - Men's and Ladies' Doubles Quarter-Finals - Mixed Doubles
Saturday 6 July	Final - Ladies' Singles Final - Men's Doubles Final - Mixed Doubles
Sunday 7 July	Final - Men's Singles Final - Ladies' Doubles

Every endeavour is made to ensure that all the information in this factsheet is correct at time of going to press. However package, price and content are subject to change. Please note this tour is strictly for customers outside the UK.





THE WIMBLEDON EXPERIENCE

OFFICIAL TOURS PROVIDED BY WIMBLEDON EXPERIENCE

ВИКИТРЕВЕЛ +7 (495) 989-43-88 HOTEL@VIKITRAVEL.RU

The Championships Wimbledon 2013

THURSDAY 4 JULY - SUNDAY 7 JULY



SEMI-FINALS & FINALS TOUR

The Wimbledon Semi-Final and Final Tours have been created for tennis fans that want to fulfil their lifetime ambition to witness history in the making at the ladies' and men's semi finals and/or finals. Both tours include exclusive membership to the award winning Gatsby Club for the duration of the tour and 3 nights accommodation.

HOTELS AVAILABLE

★ RATING	HOTEL
3 Star Hotel	Ibis - Earls Court
4 Star Hotel	Doubletree Hilton - Westminster Doubletree Hilton - Tower of London The Kensington Doyle - Kensington
5 Star Hotel	The St.Pancras Renaissance - Kings Cross The Savoy Hotel - The Strand

PACKAGE DETAILS

- Reserved Centre Court seat for two days at The Championships:
 - Semi-Finals Tour: Thursday 4 July - Ladies' Semi-Final
Friday 5 July - Men's Semi-Final
 - Finals Tour: Saturday 6 July - Ladies' Final
Sunday 7 July - Men's Final
- Exclusive membership to The Gatsby Club for two days. VIP hospitality including a 4-choice, 3-course menu designed by Albert Roux, with a choice of specially selected wines, traditional Wimbledon afternoon tea and a complimentary bar including champagne throughout the day
- Three nights accommodation in a London hotel, sharing a twin/double bedded room, with full English breakfast daily (please note there will be a supplement for single rooms)
- Information pack containing an itinerary, event card, event wallet, 2 London Travelcards and hotel information
- Return transfers from Southfields Underground Station to The Gatsby Club via the shuttle bus
- Wimbledon gift voucher for the Wimbledon shop and official Wimbledon programme
- Admission to the Wimbledon Lawn Tennis Museum
- Air-conditioning, Televisions to keep guests informed of play and newspapers available upon request
- Keith Prowse event team in attendance throughout the day



Индивидуальные и групповые экскурсионные туры в Англию-Шотландию-Уэльс. Каникулярные образовательные программы для школьников и студентов. Корпоративные мероприятия в Лондоне и Шотландии. Футбольные туры на Королевскую Премьер Лигу Англии. Визовая поддержка в UK!

(495) 989-43-88, 979-31-39 • www.vikitravel.ru • visa@vikitravel.ru

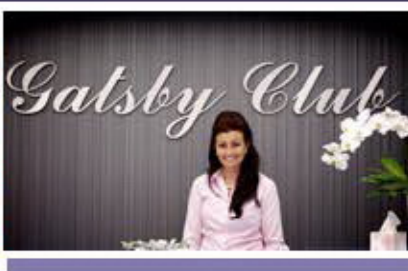
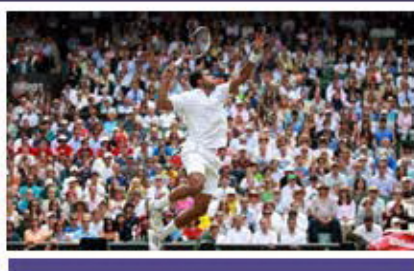




THE WIMBLEDON EXPERIENCE

OFFICIAL TOURS PROVIDED BY WIMBLEDON EXPERIENCE

ВИКИТРЕВЕЛ +7 (495) 989-43-88 HOTEL@VIKITRAVEL.RU



FINALS TOURS - PRICE GUIDE

FULLY INCLUSIVE PRICE PER PERSON (IN UK POUNDS) - INCLUSIVE OF ALL UK TAXES

SEMI-FINALS TOUR

SEMI-FINAL TOUR	DATES	COURTS	3 STAR HOTEL ★★★	4 STAR HOTEL ★★★★	5 STAR HOTEL ★★★★★
Thursday 4 July	Ladies' Semi-Final	Centre	£4340	£4480	£4950
Friday 5 July	Men's Semi-Final	Centre			

FINALS TOUR

FINAL TOUR	DATES	COURTS	3 STAR HOTEL ★★★	4 STAR HOTEL ★★★★	5 STAR HOTEL ★★★★★
Saturday 6 July	Ladies' Final	Centre	£ 5510	£5860	£6540
Sunday 7 July	Men's Final	Centre			

Fully inclusive price per person (in UK pounds) inclusive of all UK

Every endeavour is made to ensure that all the information in this factsheet is correct at time of going to press. However package, price and content are subject to change. Please note this tour is strictly for customers outside the UK.



Индивидуальные и групповые экскурсионные туры в Англию-Шотландию-Уэльс. Каникулярные образовательные программы для школьников и студентов. Корпоративные мероприятия в Лондоне и Шотландии. Футбольные туры на Королевскую Премьер Лигу Англии. Визовая поддержка в UK!

(495) 989-43-88, 979-31-39 • www.vikitavel.ru • visa@vikitavel.ru





THE WIMBLEDON EXPERIENCE

OFFICIAL TOURS PROVIDED BY WIMBLEDON EXPERIENCE

ВИКИТРЕВЕЛ +7 (495) 989-43-88 HOTEL@VIKITRAVEL.RU

PROVISIONAL SCHEDULE OF PLAY

DATE	PROVISIONAL SCHEDULE OF PLAY
Thursday 4 July	Semi-Finals - Ladies' Singles Semi-Finals - Men's and Ladies' Doubles Quarter-Finals - Mixed Doubles
Friday 5 July	Semi-Finals - Men's Singles Semi-Finals - Men's and Ladies' Doubles Quarter-Finals - Mixed Doubles
Saturday 6 July	Final - Ladies' Singles Final - Men's Doubles Final - Mixed Doubles
Sunday 7 July	Final - Men's Singles Final - Ladies' Doubles

Every endeavour is made to ensure that all the information in this factsheet is correct at time of going to press. However package, price and content are subject to change.

PLEASE NOTE: All your event documentation will be available for collection upon check in at the hotel or at The Wimbledon Experience if you are not staying the night prior. Your court tickets will be given out on day at The Wimbledon Experience.



Индивидуальные и групповые экскурсионные туры в Англию-Шотландию-Уэльс. Каникулярные образовательные программы для школьников и студентов. Корпоративные мероприятия в Лондоне и Шотландии. Футбольные туры на Королевскую Премьер Лигу Англии. Визовая поддержка в UK!

(495) 989-43-88, 979-31-39 • www.vikitavel.ru • visa@vikitavel.ru





THE WIMBLEDON EXPERIENCE

OFFICIAL TOURS PROVIDED BY WIMBLEDON EXPERIENCE

ВИКИТРЕВЕЛ +7 (495) 989-43-88 HOTEL@VIKITRavel.RU

The Championships Wimbledon 2013

MONDAY 24 JUNE - SUNDAY 7 JULY



VIP TOUR

The Wimbledon VIP tour combines a day at The Championships on Centre Court and entry to the contemporary and chic Gatsby Club where you will be wined and dined with an exclusive menu from legendary chef Albert Roux.

The tour also includes one nights accommodation at a 4* London Doubletree Hilton Hotel or Kensington Doyle Hotel, located in either Westminster, the Tower of London or Kensington. Guests also have the option to upgrade to either the 5* Savoy Hotel at The Strand or the 5* St.Pancras Renaissance Hotel in Kings Cross.

PACKAGE DETAILS

- Reserved seat at The Championships, on Centre Court for your choice of date from Monday 24 June - Sunday 7 July
- One night accommodation at a 4* or 5* London hotel with full english breakfast (based on 2 people sharing a twin/double bedroom). Please note there will be a supplement for single rooms
- Exclusive membership to The Gatsby Club, situated opposite the main entrance to The Championships.
- VIP hospitality including a 4-choice, 3-course menu designed by Albert Roux, with a choice of specially selected wines, traditional Wimbledon afternoon tea and a complimentary bar including champagne throughout the day
- Champagne reception
- London Travelcard for the day
- Admission to the Wimbledon Lawn Tennis Museum
- Plasma television screens to keep guests informed of play
- Air-conditioning
- Official Wimbledon programme
- Keith Prowse Event Team in attendance throughout the day



Индивидуальные и групповые экскурсионные туры в Англию-Шотландию-Уэльс. Каникулярные образовательные программы для школьников и студентов. Корпоративные мероприятия в Лондоне и Шотландии. Футбольные туры на Королевскую Премьер Лигу Англии. Визовая поддержка в UK!

(495) 989-43-88, 979-31-39 • www.vikitravel.ru • visa@vikitravel.ru





THE WIMBLEDON EXPERIENCE

OFFICIAL TOURS PROVIDED BY WIMBLEDON EXPERIENCE

ВИКИТРЕВЕЛ +7 (495) 989-43-88 HOTEL@VIKITRAVEL.RU

VIP TOUR - PRICE GUIDE

FULLY INCLUSIVE PRICE PER PERSON (IN UK POUNDS) - INCLUSIVE OF ALL UK TAXES

CENTRE COURT	4 STAR HOTEL ★★★★	5 STAR HOTEL ★★★★★	
Monday 24 June	£1540	£2290	Reigning Men's Singles Champion opens play on Centre Court First round matches - Men's and Ladies' Singles
Tuesday 25 June	£1825	£2175	Reigning Ladies' Singles Champion opens play on Centre Court First round matches - Men's and Ladies' Singles
Wednesday 26 June	£1940	£2290	Second round matches - Men's and Ladies' Singles First round matches - Men's and Ladies' Doubles
Thursday 27 June	£1940	£2290	Second round matches - Men's and Ladies' Singles First round matches - Men's and Ladies' Doubles
Friday 28 June	£2415	£2765	Third round matches - Men's and Ladies' Singles Second round matches - Men's and Ladies' Doubles First round matches - Mixed Doubles
Saturday 29 June	£2045	£2395	Third round matches - Men's and Ladies' Singles Second round matches - Men's and Ladies' Doubles First round matches - Mixed Doubles Boys' and Girls' Championships begin Men's and Ladies' over 35's & over 45's Championships begin
Monday 1 July	£2400	£2750	Fourth round matches - Men's and Ladies' Singles Third round matches - Men's and Ladies' Doubles Second round matches - Mixed Doubles
Tuesday 2 July	£2045	£2395	Quarter-Finals - Ladies' Singles Fourth round matches - Men's Singles Third round matches - Men's and Ladies' Doubles Third round matches - Mixed Doubles
Wednesday 3 July	£2945	£3295	Quarter-Finals - Men's Singles Quarter-Finals - Men's and Ladies' Doubles Third round matches - Mixed Doubles
Thursday 4 July	£2415	£2765	Semi-Finals - Ladies' Singles Semi-Finals - Men's and Ladies' Doubles Quarter-Finals - Mixed Doubles
Friday 5 July	£4305	£4655	Semi-Finals - Men's Singles Semi-Finals - Men's and Ladies' Doubles Quarter-Finals - Mixed Doubles
Saturday 6 July	£2625	£2975	Final - Ladies' Singles Final - Men's Doubles Final - Mixed Doubles
Sunday 7 July	£4675	£5025	Final - Men's Singles Final - Ladies' Doubles

Every endeavour is made to ensure that all the information in this factsheet is correct at time of going to press. However package, price and content are subject to change. Please note this tour is strictly for customers outside the UK.

PLEASE NOTE: All your event documentation will be available for collection upon check in at the hotel or at The Wimbledon Experience if you are not staying the night prior. Your court tickets will be given out on day at The Wimbledon Experience.



Индивидуальные и групповые экскурсионные туры в Англию-Шотландию-Уэльс. Каникулярные образовательные программы для школьников и студентов. Корпоративные мероприятия в Лондоне и Шотландии. Футбольные туры на Королевскую Премьер Лигу Англии. Визовая поддержка в UK!

(495) 989-43-88, 979-31-39 • www.vikitavel.ru • visa@vikitavel.ru





**THE
WIMBLEDON
EXPERIENCE**

OFFICIAL TOURS PROVIDED BY WIMBLEDON EXPERIENCE

ВИКИТРЕВЕЛ +7 (495) 989-43-88 HOTEL@VKITRAVEL.RU

The Championships, Wimbledon 2013

VIP TOUR

MONDAY 24 JUNE - SUNDAY 7 JULY



Индивидуальные и групповые экскурсионные туры в Англию-Шотландию-Уэльс. Каникулярные образовательные программы для школьников и студентов. Корпоративные мероприятия в Лондоне и Шотландии. Футбольные туры на Королевскую Премьер Лигу Англии. Визовая поддержка в UK!

(495) 989-43-88, 979-31-39 • www.vkitravel.ru • visa@vkitravel.ru





THE WIMBLEDON EXPERIENCE







The Sully Club
10





Champagne Bar



The Terrace Bar





Interact



